

QUALITY READY MADE UNIFORM

Uniform with different designs made for male and female.



Washing Machine below 40°C



Medium Iron 150°C



Wash by Hand



Do Not Bleach

Thumb



CORPORATE UNIFORM - SERIES 01



U101
Red

U102
Apple Green

U103
Royal Blue



U104
Orange

U106
Navy Blue



FU101
Red

FU102
Apple Green

FU103
Royal Blue



FU104
Orange

FU106
Navy Blue

04



U: Male Version FU: Female Version made of comb cotton

CORPORATE UNIFORM - SERIES 02



U201
Red



U202
Apple Green



U204
Orange



U205
Yellow



U209
Cyan



FU201
Red



FU202
Apple Green



FU204
Orange



FU205
Yellow



FU209
Cyan

U: Male Version FU: Female Version made of comb cotton





CORPORATE UNIFORM - SERIES 03



U301
Red



U302
Apple Green



U303
Royal Blue



U304
Orange



U305
Yellow



FU301
Red



FU302
Apple Green



FU303
Royal Blue



FU304
Orange



FU305
Yellow





CORPORATE UNIFORM - SERIES 04



U401
Red



U402
Apple Green



U403
Royal Blue



U405
Yellow



FU401
Red



FU402
Apple Green



FU403
Royal Blue



FU405
Yellow



U: Male Version FU: Female Version made of comb cotton



CORPORATE UNIFORM - SERIES 05



U501
Red

NEW



U502
Apple Green



U503
Royal Blue



U504
Orange



U507
Purple



FU501
Red

NEW



FU502
Apple Green



FU503
Royal Blue



FU504
Orange



FU507
Purple

U: Male Version FU: Female Version made of comb cotton

CORPORATE UNIFORM - SERIES 06



U604
Orange

U607
Purple

U608
Maroon



U609
Cyan

U612
Grey



FU604
Orange

FU607
Purple

FU608
Maroon



FU609
Cyan

FU612
Grey



U: Male Version FU: Female Version made of comb cotton



CORPORATE UNIFORM - SERIES 07



U701
Red (P/Black)

U702
Apple Green (P/Black)

U703
Royal Blue (P/White)



U704
Orange (P/Black)

U710
Black (P/Red)

U714
Light Blue (P/Navy Blue)



FU701
Red (P/Black)

FU702
Apple Green (P/Black)

FU703
Royal Blue (P/White)



FU704
Orange (P/Black)

FU710
Black (P/Red)

FU714
Light Blue (P/Navy Blue)



U: Male Version FU: Female Version made of comb cotton

**CORPORATE UNIFORM
- SERIES 08**



U801
Red



FU801
Red



U803
Royal Blue



FU803
Royal Blue



U804
Orange



FU804
Orange



U810
Black



FU810
Black





CORPORATE UNIFORM - SERIES 09



U901
Red

U906
Navy Blue

U910
Black



U912
Grey

U913
Forest Green



FU901
Red

FU906
Navy Blue

FU910
Black



FU912
Grey

FU913
Forest Green





THE BRAND NEW SERIES 2013

CORPORATE UNIFORM - SERIES 10



U1003 Royal Blue U1006 Navy Blue U1007 Purple U1012 Grey



FU1003 Royal Blue FU1006 Navy Blue FU1007 Purple FU1012 Grey



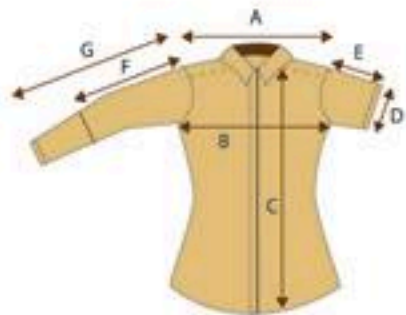
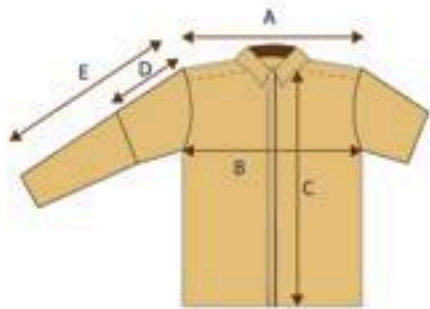
Before Fold

After Fold



U: Male Version FU: Female Version made of comb cotton

SIZE CHART measurement for male and female corporate uniform



| MALE | | S | M | L | XL | 2XL | 3XL |
|--------------------|--|-----|-------|-------|-------|-------|-------|
| A : Shoulder/Bahu | | 17" | 18" | 19" | 20" | 21" | 22" |
| B : Chest/Dada | | 42" | 44" | 46" | 48" | 50" | 52" |
| C : Length/Panjang | | 28" | 28.5" | 29" | 29.5" | 30" | 30.5" |
| D : Short Sleeve | | 10" | 10.5" | 10.5" | 10.5" | 11" | 11" |
| E : Long Sleeve | | 22" | 23" | 24" | 24" | 24.5" | 24.5" |

| FEMALE | | XS | S | M | L | XL | 2XL | 3XL |
|--------------------|--|-----|-------|-------|-------|-------|-------|-------|
| A : Shoulder/Bahu | | 14" | 14.5" | 15" | 15.5" | 16" | 16.5" | 17" |
| B : Chest/Dada | | 36" | 38" | 40" | 42" | 44" | 46" | 48" |
| C : Length/Panjang | | 25" | 25.5" | 26" | 26.5" | 27" | 27.5" | 28" |
| D : Sleeve Width | | 10" | 10.5" | 11" | 11.5" | 12" | 12.5" | 12.5" |
| E : Short Sleeve | | 8" | 8.5" | 8.5" | 9" | 9" | 10" | 10" |
| F : 3/4 Sleeve | | 13" | 13.5" | 14" | 14" | 14.5" | 15" | 15" |
| G : Long Sleeve | | 22" | 22" | 22.5" | 23" | 23" | 23.5" | 24" |

* All measurement are subjected to be different ± 0.5 inch from the actual product.



COMB COTTON COLOR CHART

You can now choose your desire fabric color from these 30 colors. For more accurate color reference, you may request for our comb cotton fabric catalog.